



ANNUAL
REPORT
Fiscal Year 2025

Dear Friends,

Every year, we are reminded that the earliest experiences in a child's life have lasting impact. Not just for that child, but for families, communities, and our shared future. This past year reinforced just how powerful that impact can be when the right support is in place at the right time.

Early childhood is a period of rapid growth and possibility. In just a few short years, the brain forms the connections that shape how a child learns, relates to others, and navigates the world. These foundational moments create opportunities that can last a lifetime.

For parents and caregivers, this time can be as challenging as it is meaningful. It is filled with questions, decisions, and the daily work of helping young children grow and thrive. At Southwest Human Development, we are privileged to partner with families during these critical years, providing guidance, resources, and expertise grounded in decades of experience.

In 2025, we were proud to support more than 140,000 children, families, and professionals across Arizona. Through our 40+ programs in Child Development and Mental Health, Easterseals Disabilities Services, Early Literacy and Head Start, Family Support, and Professional Development, we continued to expand access to the resources children need to feel safe, supported, and ready to succeed.

Our work is made possible by the generosity of our donors, the commitment of our partners, and the dedication of our team. Because of you, more children are reaching key milestones, more families are finding support, and more communities are growing stronger together.

Thank you for being part of this work. Together, we are creating brighter beginnings and stronger futures for every child we serve.



GWard
Ginger Ward, CEO



CNowaczyk
Christine Nowaczyk, Chair



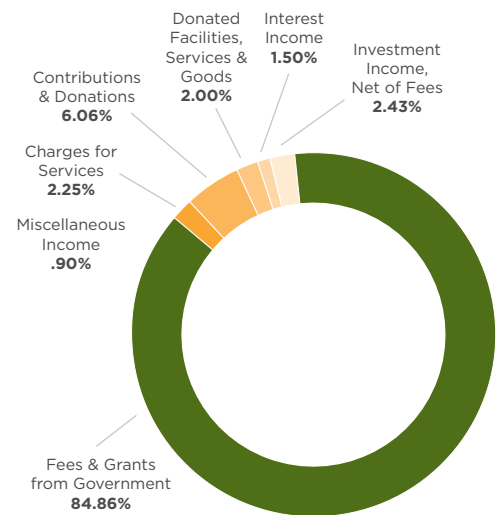


FY25 Financials

Revenue and Support

Fees & Grants from Government	\$63,928,299
Charges for Services	1,692,488
Contributions & Donations	4,562,413
Donated Facilities, Services & Goods	1,504,881
Interest Income	1,129,113
Miscellaneous Income	680,191
Investment Income, Net of Fees	1,834,752

\$75,332,137
Total Revenue-Budget



Expenses

Program Services:

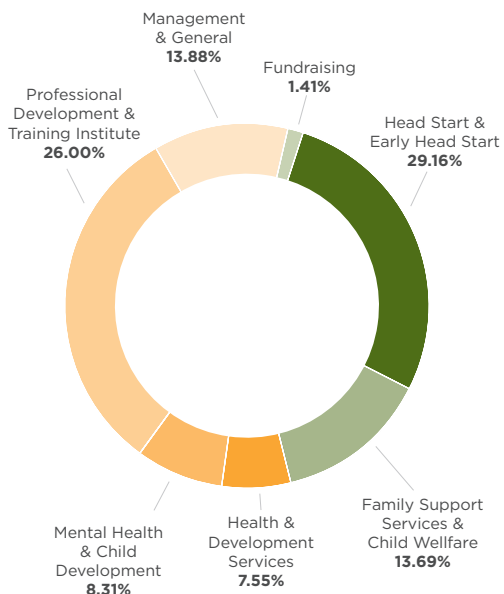
Head Start & Early Head Start	\$23,137,818
Family Support Services & Child Welfare	10,860,202
Health & Development Services	5,994,334
Mental Health & Child Development	6,594,596
Professional Development & Training Institute	20,625,604

\$67,212,554

Support Services:

Management & General	11,011,292
Fundraising	1,118,409

\$79,342,255
Total Expenses



Corporate & Foundation Supporters

American Family Insurance Dreams Foundations
Andersen Corporate Foundation
Applied Materials
APS
ARC Document Solutions
Arizona Central Credit Union
Arizona Diamondbacks Foundation
Arizona Republic/Season for Sharing Campaign
Avnet Inc
AYCO Charitable Foundation
Blue Cross Blue Shield of Arizona
Board of Visitors
Boeing Arizona Employees Community Fund
Burton Family Foundation
Century 21
Charles Schwab & Co Inc
Children in Need Foundation/Phoenix 20-30
Classic Industrial Services, Inc.
Complete Fire Protection Inc
CopperPoint Insurance Companies
Cox Enterprises
Delta Dental
Desert Financial Credit Union
Empire Cat
Envision Flooring
EquipmentShare
Faith Tech
Federal Home Loan Bank of San Francisco
Fleming West Building Co.
Gila River Indian Community
Global Credit Union Foundation
Harder Mechanical Inc
Hawkeye Electric
Helios Education Foundation
Ibis Foundation
In-N-Out Burgers Foundation

InteriorWorx Commercial Flooring
June & Julian Foss Foundation
K2 Electric
LISC Phoenix - Local Initiatives Support Corp
Lockton
Midstate Mechanical
Mortenson
Nina Mason Pulliam Charitable Trust
onsemi
Phoenix Rotary Club
Phoenix Suns Charities
PNC Financial
PNC Foundation
Power Home Remodeling
Reading is Fundamental
Rocket Community Fund
Simone Charitable Foundation Inc
Sonora Quest Laboratories
Salt River Project
Star Roofing
Sturgeon Electric Company, Inc.
Suntec Concrete
The Eucharist Foundation
The Irving Harris Foundation
The Steve Nash Foundation
Thunderbirds Charities
TJX Foundation
UBS Financial Services Inc
United Rentals, Gilbert
United Way, Valley of the Sun
Vanguard Charitable
Virginia G. Piper Charitable Trust
WD Manor
Wells Fargo
West Coast Partitions, Inc.





About Us

Mission

Southwest Human Development strengthens the foundation Arizona's children need for a great start in life.

Vision

A positive future for every child.

Core Values

Our core values embody Southwest Human Development's commitment to services that uplift the lives of children, families and other care providers, and the communities in which they live. These values are intended to guide the professional development, ethical conduct and skilled practice of all of our staff, whatever their specific role within the agency. All staff are valued as making essential contributions to strengthening the foundation that Arizona's children need for a great start in life.



HIGH QUALITY SERVICES



LIFELONG LEARNING



PARTNERSHIPS



FAIRNESS



REFLECTIVE PRACTICE



INNOVATION



RESPONSIBLE STEWARDSHIP

Our Work

The first five years of life are the most critical in a child's development. At Southwest Human Development, our services improve lives and help families by supporting young children and their caregivers during this important time. In partnership with families, we provide children with the care, attention and support needed to set them on a path to success in school and life, and help them reach their fullest capabilities.

We are Arizona's largest nonprofit organization dedicated to early childhood development and our 700 staff members provide 40 innovative programs and services to 135,000 children and their families each year in the areas of:

- Child Development
- Mental Health
- Easterseals Disabilities Services
- Early Literacy
- Head Start and Early Head Start
- Family Support and Child Welfare
- Professional Development and Training

Maricopa County

- Early Head Start & Head Start
- Healthy Families
- Direct Support Services
- Family Connections
- Parent Partners Plus
- Kinship Support Services
- Inclusion Program
- High Risk Perinatal Program
- Nurse-Family Partnership
- Side By Side
- Professional Development Institute at Educare Arizona
- Raising a Reader
- Family Engagement
- Q3: Trauma Informed Care & Inclusion Program
- EHS CCP Strong Foundations
- Tutor Time

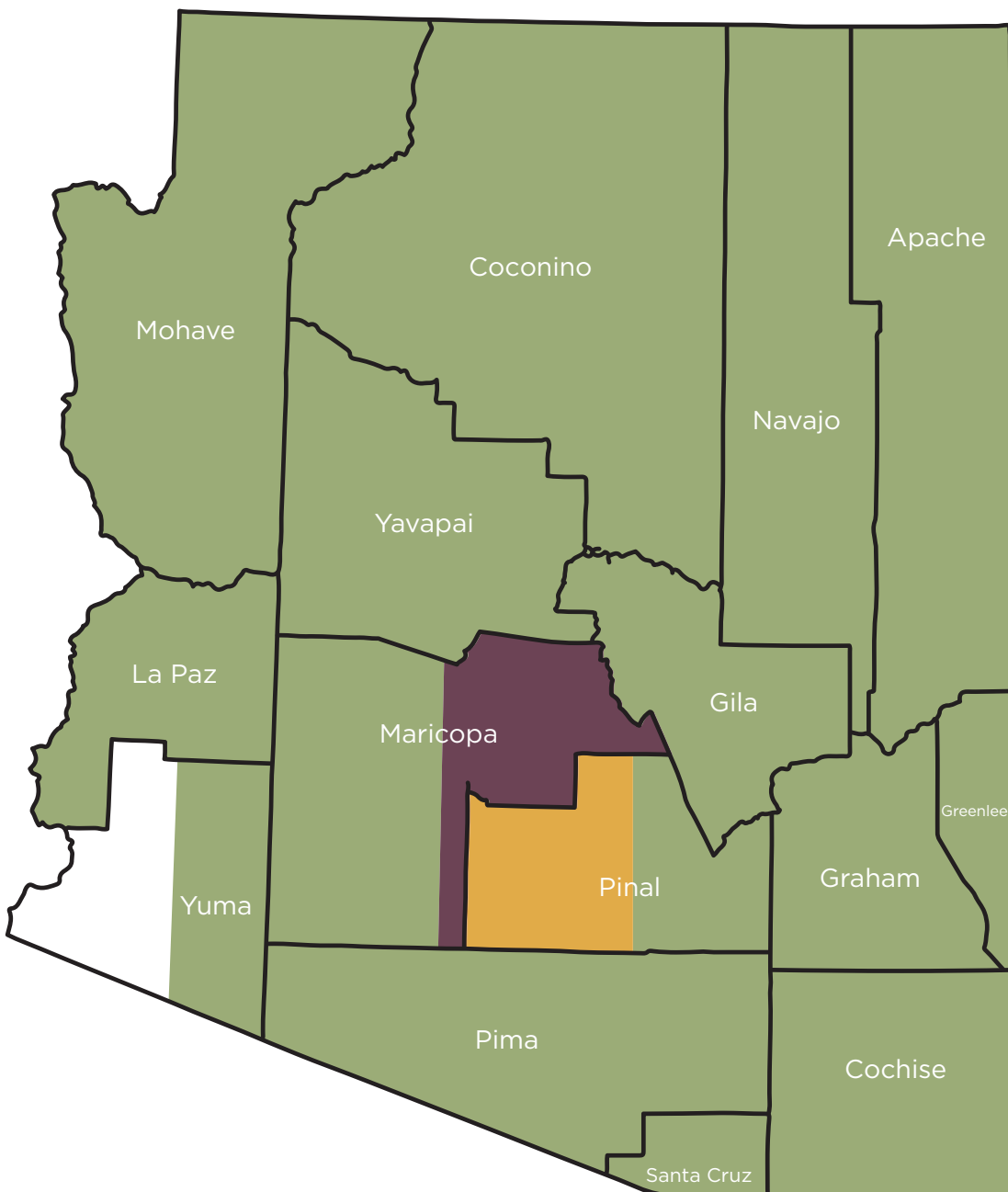
Pinal County

- Kinship Support Services



Statewide

- Birth to Five Helpline
- Smart Support
- Early Childhood Business Solutions
- Birth to Five Center of Excellence
- Foster Care Training
- Professional Development
- Construct Coaching
- Smooth Way Home
- Harris Infant and Early Childhood Mental Health Training Institute
- AZ Steps
- Journey Through Books
- Quality First Academy
- Quality First Assessment
- Quality First Coaching
- Let's Talk Dads



You Can Help

The investments we make today in young children advance the health, well-being and development of our community. More and more evidence suggests that there are aspects of early childhood behavior and mental health that, if nurtured, can improve children's life chances. We're asking you to show your support for our kids by donating to our work to improve children's lives. You can do so in a few easy ways:

Make a tax-deductible contribution through our website at swhd.org/give.

Take advantage of the Arizona Charitable Tax Credit and receive a dollar-for-dollar deduction on your state income taxes. It's easy — just visit swhd.org/taxcredit to learn how to donate.

Volunteer your time helping children and families throughout the community. We have some great ways to get involved on our website at swhd.org/volunteer.

Thank you for your support of Arizona children and their families. With your help, we can ensure a brighter future for our community.

FOR QUESTIONS, PLEASE CONTACT US AT (602) 224-1743 OR GIVE@SWHD.ORG



Creating a Positive Future for Young Children

2850 N. 24TH STREET
PHOENIX, AZ 85008
(602) 266-5976 | [SWHD.ORG](https://swhd.org)

