



ANNUAL REPORT

Fiscal Year 2024

Dear Friends,

As we reflect on the past year, our hearts are filled with gratitude and determination. Once again, we have seen how early childhood holds the incredible power to shape not only individual lives but the future of our communities.

The first five years of life are nothing short of miraculous. In this brief window, a child's brain and body grow at a pace unmatched by any other time. These early experiences form the foundation of a child's lifelong health, learning, and happiness.

For parents and caregivers, these years are a whirlwind of wonder and responsibility. They are filled with moments of joy, discovery, and sometimes uncertainty. At Southwest Human Development, we walk alongside families during this precious time, offering a steady hand, a listening ear, and the support they need to nurture their children's potential.

In 2024, we were honored to serve more than 140,000 children, families, and professionals across Arizona. Through our 40-plus programs in Child Development and Mental Health, Easterseals Disabilities Services, Early Literacy and Head Start, Family Support, and Professional Development, we helped create spaces where children feel safe, seen, and supported.

Every milestone reached and every challenge overcome is a testament to the strength of our community. None of it would be possible without our donors, partners, and dedicated team. Your belief in our mission fuels our work and reminds us that we are never alone in this journey.

Thank you for standing with us. Together, we are not just imagining a better future. We are building it, one child at a time.



GWard
Ginger Ward, CEO

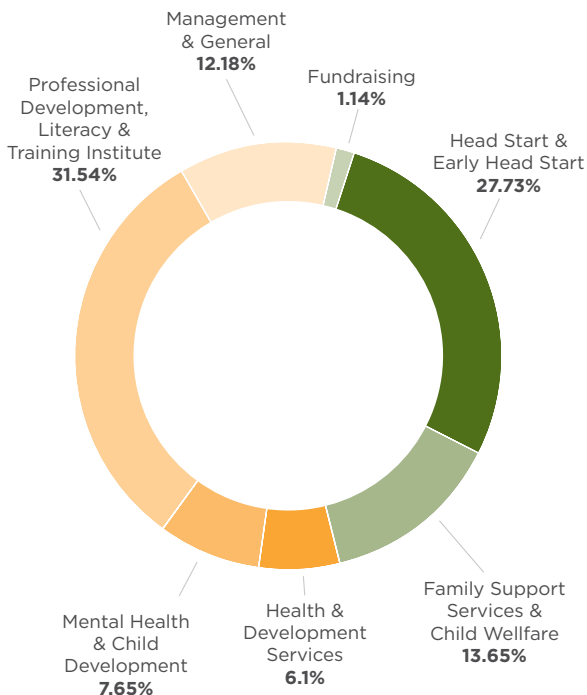
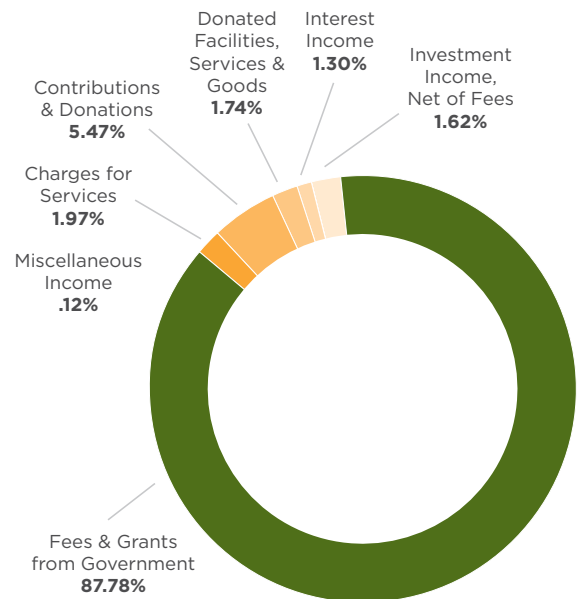


FY24 Financials

Revenue and Support

Fees & Grants from Government	77,600,250
Charges for Services	1,740,025
Contributions & Donations	4,835,842
Donated Facilities, Services & Goods	1,542,506
Interest Income	1,147,374
Miscellaneous Income	112,149
Investment Income, Net of Fees	1,428,852

88,406,998
Total Revenue-Budget



Expenses

Program Services:

Head Start & Early Head Start	24,438,891
Family Support Services & Child Welfare	12,031,336
Health & Development Services	5,380,329
Mental Health & Child Development	6,741,780
Professional Development, Literacy & Training Institute	27,793,462

76,385,798

Support Services

Management & General	10,733,310
Fundraising	1,002,576

\$88,121,684
Total Expenses



About Us

Mission

Southwest Human Development strengthens the foundation Arizona's children need for a great start in life.

Vision

A positive future for every child.

Core Values

Our core values embody Southwest Human Development's commitment to services that uplift the lives of children, families and other care providers, and the communities in which they live. These values are intended to guide the professional development, ethical conduct and skilled practice of all of our staff, whatever their specific role within the agency. All staff are valued as making essential contributions to strengthening the foundation that Arizona's children need for a great start in life.

- High Quality and Ethical Services
- Learning as a Lifelong Process
- Working in Partnership with Families, Caregivers and Community Providers
- Reflective Practice in Support of Relationship-Based Work
- Innovative Responsiveness to Community Needs
- Responsible Stewardship

Our Work

The first five years of life are the most critical in a child's development. At Southwest Human Development, our services improve lives and help families by supporting young children and their caregivers during this important time. In partnership with families, we provide children with the care, attention and support needed to set them on a path to success in school and life, and help them reach their fullest capabilities.

We are Arizona's largest nonprofit organization dedicated to early childhood development and our 700 staff members provide 40 innovative programs and services to 135,000 children and their families each year in the areas of:

- Child Development
- Mental Health
- Easterseals Disabilities Services
- Early Literacy
- Head Start and Early Head Start
- Family Support and Child Welfare
- Professional Development and Training

Maricopa County

- Early Head Start & Head Start
- Healthy Families
- Foster Care & Adoption
- Direct Support Services
- Family Connections
- Parent Partners Plus
- Home Assessments & Courtesy Supervision
- Inclusion Program
- High Risk Perinatal Program
- Nurse-Family Partnership
- Side By Side
- Professional Development Institute at Educare Arizona
- Raising a Reader
- Reach Out & Read

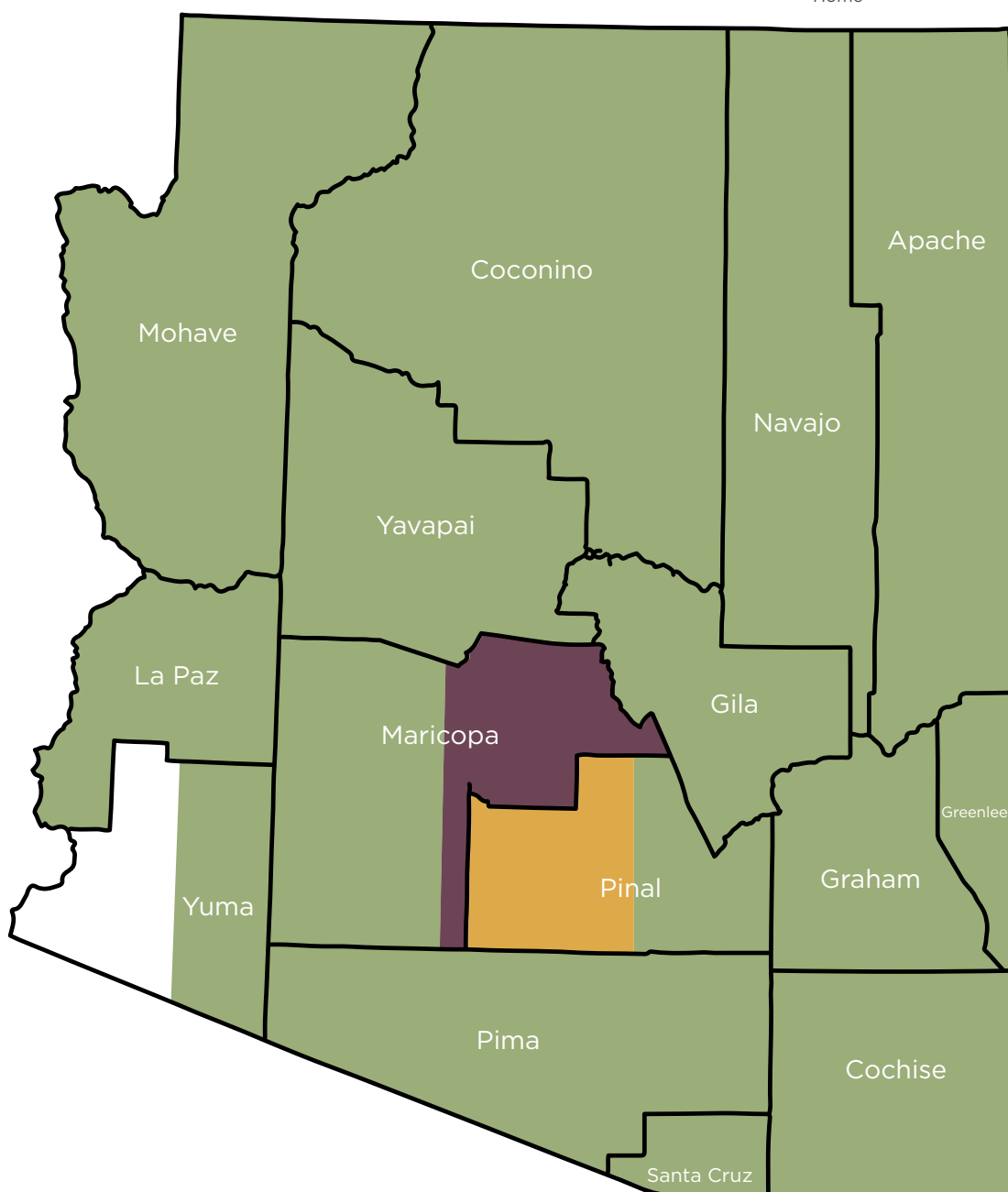
Pinal County

- Home Assessments & Courtesy Supervision



Statewide

- Birth to Five Helpline
- Smart Support
- Early Childhood Business Solutions
- Birth to Five Center of Excellence
- Trauma-Informed Care
- Professional Development
- Construct Coaching
- Smooth Way Home
- Harris Infant and Early Childhood Mental Health Training Institute
- AZ Steps Training for Professionals
- Journey Through Books
- Quality First Academy
- Quality First Assessment
- Quality First Coaching
- Let's Talk Dads



You Can Help

The investments we make today in young children advance the health, well-being and development of our community. More and more evidence suggests that there are aspects of early childhood behavior and mental health that, if nurtured, can improve children's life chances. We're asking you to show your support for our kids by donating to our work to improve children's lives. You can do so in a few easy ways:

Make a tax-deductible contribution through our website at swhd.org/give.

Take advantage of the Arizona Charitable Tax Credit and receive a dollar-for-dollar deduction on your state income taxes. It's easy — just visit swhd.org/taxcredit to learn how to donate.

Volunteer your time helping children and families throughout the community. We have some great ways to get involved on our website at swhd.org/volunteer.

Thank you for your support of Arizona children and their families. With your help, we can ensure a brighter future for our community.

FOR QUESTIONS, PLEASE CONTACT US AT (602) 224-1743 OR GIVE@SWHD.ORG



Creating a Positive Future for Young Children

2850 N. 24TH STREET
PHOENIX, AZ 85008
(602) 266-5976
SWHD.ORG