



ANNUAL REPORT

FISCAL YEAR 2020

ABOUT US

MISSION

Southwest Human Development strengthens the foundation Arizona's children need for a great start in life.

VISION

A positive future for every child.

CORE VALUES

Our core values embody Southwest Human Development's commitment to services that uplift the lives of children, families and other care providers, and the communities in which they live. These values are intended to guide the professional development, ethical conduct, and skilled practice of all of our staff, whatever their specific role within the agency. All staff are valued as making essential contributions to strengthening the foundation that Arizona's children need for a great start in life.

- High Quality and Ethical Services
- Learning as a Lifelong Process
- Promoting Social Justice, Equity, and Inclusiveness
- Working in Partnership with Families, Caregivers, and Community Providers
- Reflective Practice in Support of Relationship-Based Work
- Innovative Responsiveness to Community Needs
- Responsible Stewardship

OUR WORK

The first five years of life are the most critical in a child's development. At Southwest Human Development, our services improve lives and help families by supporting young children and their caregivers during this important time.

In partnership with families, we provide children with the care, attention, and support needed to set them on a path to success in school and life, and help them reach their fullest capabilities.

We are Arizona's largest non-profit organization dedicated to early childhood development and our 900 staff members provide 40 innovative programs and services to 135,000 children and their families each year in the areas of:

- Child Development
- Mental Health
- Easterseals Disabilities Services
- Early Literacy
- Head Start and Early Head Start
- Family Support and Child Welfare
- Professional Development and Training



2020 HIGHLIGHTS AND ACCOMPLISHMENTS

When the COVID-19 pandemic hit, Southwest Human Development modified the way it delivers services to adapt to the new reality. Many of our services went virtual, but we continued to make a difference in the lives of thousands of Arizona families.

\$445,000+

Spent on
AZ families



222

Families Provided with Rent,
Utilities, and Basic Needs



\$176,000

in Emergency Relief
Grants for 48 Early Care
and Education Programs



\$5,000

in Fry's Food Cards
for Families





15,000

Meals Served
at Educare Arizona

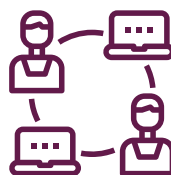


\$52,000

in Assistance
Given to Early
Childhood Centers

\$156,560

Raised at
Walk With Me



\$21,000

Raised During Grow A
Reader Virtual Book Drive



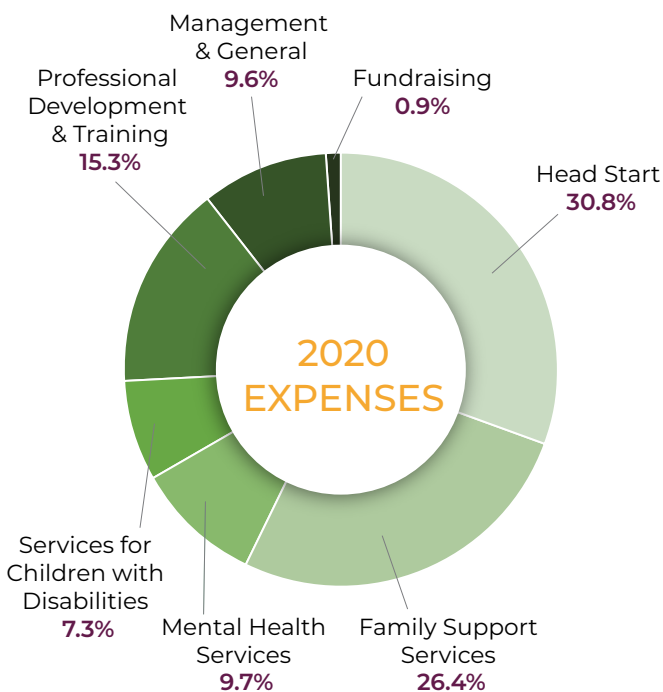
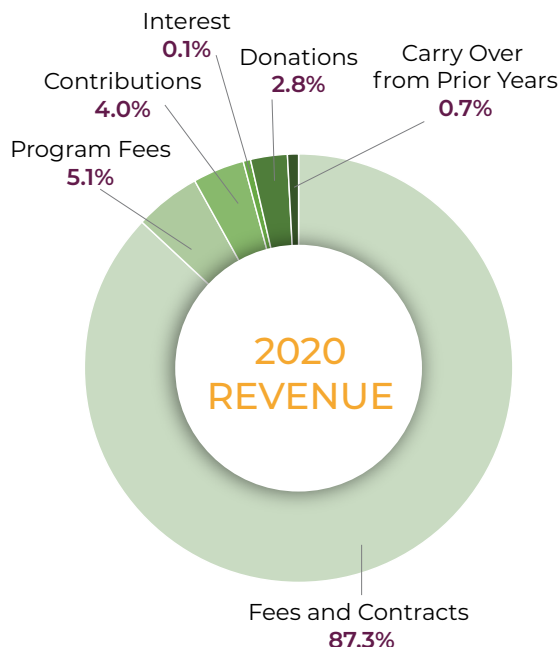
FY 2020

AUDITED FINANCIALS

REVENUE AND SUPPORT

Fees and Grants from Governments	\$ 59,072,230
Charges for Services	3,712,557
Contributions and Donations	4,667,019
Donated Facilities and Services	1,348,565
Interest Income	83,148
Miscellaneous Income	303,061

\$ 69,186,580
Total Revenue and Support



EXPENSES

Program Expenses

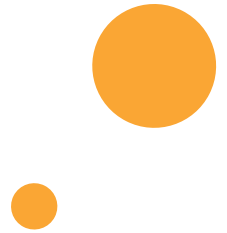
Head Start	\$ 21,591,429
Family Support Services	17,290,976
Services for Children with Disabilities	4,341,659
Mental Health Services	5,367,899
Professional Development and Training	9,853,672
Total Program Expenses	58,445,635

Support Services

Management and General	7,642,568
Fundraising	623,466

\$ 66,711,669
Total Expenses

CORPORATE AND FOUNDATION SUPPORTERS



Albertsons Foundation and
Safeway Foundation

American Furniture Warehouse

Arizona Community Foundation

Arizona Coyotes

Arizona Public Service

AT&T Foundation

Blue Cross Blue Shield of Arizona

BMO Harris Bank

BOKF Foundation

Buuck Family Foundation

CarMax Foundation

Centene Corporation/Arizona
Complete Health

Century 21 Arizona Foothills

Children In Need Foundation

CopperPoint Insurance Companies

Cox Charities

Delta Dental Foundation of Arizona

Executive Council Charities

Easterseals

Fiesta Bowl Charities

General Motors

Homesite

Ibis Foundation of Arizona

In-N-Out Burger Foundation

Kemper & Ethel Marley Foundation

Kroger/Fry's Food Stores of Arizona, Inc.

Lockton Companies

Mortenson

Mountain America Credit Union

Nextiva Cares

Nina Mason Pulliam Charitable Trust

ON Semiconductor

Performance Contracting

Phoenix Suns Charities

PNC Foundation

Quicken Loans

Salt River Pima-Maricopa Indian Community

Simone Charitable Foundation, Inc

Steve Nash Foundation

Stranahan Foundation

The Arizona Republic/Season for
Sharing Campaign

The Steele Foundation

The Surplus Line Association of Arizona
Foundation

The Viola M. McCusker Charitable Trust

Thunderbirds Charities

UnitedHealth Group

University of Phoenix Foundation

Valley of the Sun United Way

Vanguard Charitable

Virginia G. Piper Charitable Trust

Wells Fargo Foundation

YOU CAN HELP

The investments we make today in young children advance the health, well-being and development of our community. More and more evidence suggests that there are aspects of early childhood behavior and mental health that, if nurtured, can improve children's life chances. We're asking you to show your support for our kids by donating to our work to improve children's lives. You can do so in a few easy ways:

- ① **Make a tax-deductible contribution** through our website at swhd.org/give.
- ② **Take advantage of the Arizona Charitable Tax Credit** and receive a dollar-for-dollar deduction on your state income taxes. It's easy — just visit swhd.org/taxcredit to learn how to donate.
- ③ **Volunteer your time** helping children and families throughout the community. We have some great ways to get involved on our website at swhd.org/volunteer.

Thank you for your support of Arizona children and their families. With your help, we can ensure a brighter future for our community.

FOR QUESTIONS, PLEASE CONTACT US AT (602) 808-GIVE (4483) OR GIVE@SWHD.ORG



2850 N. 24TH STREET
PHOENIX, AZ 85008
(602) 266-5976
[SWHD.ORG](https://swhd.org)

